

A photograph of a golf course landscape. In the foreground, there is a green fairway with a small orange marker. A path of tall grass leads towards a green in the middle ground, also marked with an orange flag. Several large, mature trees with dense green foliage stand on the left side of the image. In the background, a clubhouse with a brown roof is visible among more trees under a blue sky with scattered white clouds.

MILBURN COUNTRY CLUB

2020 GOLF BOOKLET



Golf Operations Contacts

Golf Operations

Luke Smith, PGA

Director of Golf

913-890-2641 luke@milburn.org

Zack Proffitt, PGA

Assistant Professional

913-432-1224 zack@milburn.org

Donnie Allis

Assistant Professional

913-432-1224 donnie@milburn.org

Mark Chedrick

Outside Service Supervisor

golfshop@milburn.org

Golf Course Maintenance

Steve Wilson

Head Superintendent

913-236-9951 steve@milburn.org



Defending Champions

Harry Robb Champions

Ladies: Vicki Smith, Lavada
Gleissner & Kathy Young

Men's: Scott Edwards, Clayton
Harper, Jeff Weber &
Dr. Tom Sullivan

Men's Sunflower Champion

Alex Lew & Andrew Volckens

Club Championship

Ladies: Hanna Robinett

Men's: Trent Robinett

Senior Club Championship

Ladies: Linda Seiner & Dori
Weber

Men's: Scott Richey & Lynn
Dickey

Men's Donohoe

Nick Reddell & Sean Robertson

Ladies Sunflower

Ann Johnson, Melanie Dalton,

Junior Club Champion

Girls: Hanna Robinett

Boys: Grant Beichley

Strangline Invitational

Jay Hepler & Jason Seeman

Men's League Champions

Bushwood's Best

Tom Gleissner, Lynn Dickey, Jon
Arkin, Rick Fleenor, Tom Baddeley,
Dave Jackson, Steve Carlson, Jay
Edwards and Jim DeMars

Phoenix Cup Matches

Individual Gross: Harrison Scott

Individual Net: Robert Fischgrund

Team Gross:

Harrison Scott & Andy Mitchell

Team Net:

Nate Mehill & Eric Clancey

Congratulations to our 2019 Champions and
best of luck to all of our 2020 participants!

Table of Contents



Calendar	6-12
Club Event Schedule	13-24
On-Going Event Schedule	25-33
Golf Performance Center	34
Golf Programming	35-37
Rates & Fees	38-39
Etiquette & Attire	40
Care of the Course	41
Golf Course Rules	42
Practice Facilities	43
Schedule of Play	44-45
Pace of Play	46-47
Guest Policies	48-49
Golf Cart Policies	50
Note of Eligibility	51
Organizations	52-53
Reciprocal Clubs	54
Club Directory	55

APRIL						
Sun	Mon	Tue	Wed	Thu	Fri	Sat
	Club Closed		1	2	3	4
5 All Sports Sign-Up	6 Club Closed	7 18 Hole Ladies Opening Day	8 9 Hole Ladies Opening Day	9	10	11 Coffee & Clinics
12 Easter Sunday	13 Club Closed	14 18 Hole Ladies Pairings	15 9 Hole Ladies Men's League	16 Titleist Fitting Day	17 Ping Fitting Day	18 Mizuno Fitting Day
19	20 Club Closed	21 18 Hole Memorial Tourney	22 9 Hole Ladies Men's League	23 Callaway Fitting Day	24	25 TaylorMade Fitting Day
26	27 Club Closed	28 18 Hole Ladies Pairings	29 9 Hole Informal Guest Day	30 Men's Stag Day	31	


**Tee times will likely still be available on event dates. Please check the tee sheet for a comprehensive view on availability.*

MAY						
Sun	Mon	Tue	Wed	Thu	Fri	Sat
					1	2
3	4 Club Closed	5 18 Hole Eclectic Day 1	6 9 Hole MYOG Men's League	7	8	9
10 Mother's Day	11 Club Closed	12 18 Hole Eclectic Day 2	13 9 Hole Pairings	14	15	16 Harry Robb Tourney
17	18 Club Closed	19 18 Hole Ladies Pairings	20 9 Hole Pairings Men's League	21	22	23
24	25 Memorial Day	26 Club Closed	27 9 Hole Preferred Classic	28	29	30 9 Hole Couples Golf

**Tee times will likely still be available on event dates. Please check the tee sheet for a comprehensive view on availability.*

JUNE						
Sun	Mon	Tue	Wed	Thu	Fri	Sat
	1 Club Closed	2 18 Hole Formal Guest Day	3 9 Hole Preferred Men's League	4 Jr Golf Play Day	5	6
7	8 Club Closed	9 18 Hole Pairings	10 9 Hole MYOG	11	12	13
			MEN'S SUNFLOWER MEMBER-GUEST			
14	15 Club Closed	16 Team Play 9:00 AM Shotgun	17 9 Hole Pairings	18 Jr Golf Play Day	19	20 TaylorMade Fitting Day
21 Father's Day	22 Club Closed	23 18 Hole Member- Member		24 Men's League	25 Jr Golf Play Day Mizuno Fitting Day	26 PXG Fitting Day
						27 9 Hole Couples Golf Callaway Fitting Day
28	29 Club Closed	30 18 Hole Pairings				



**Tee times will likely still be available on event dates. Please check the tee sheet for a comprehensive view on availability.*

JULY						
Sun	Mon	Tue	Wed	Thu	Fri	Sat
	Club Closed		1 9 Hole Formal Guest Day	2 Jr Golf Play Day	3	4 Fourth of July 
5	Club Closed	7 18 Hole Pairings	8 9 Hole Pairings	9 Jr Golf Play Day	10 Club Championship	11
12 Club Champs	13 Club Closed	14 18 Hole Informal Guest Day	15 9 Hole Champs Men's League	16 Jr Golf Play Day	17	18
19	20 Club Closed	21 18 Hole Ladies ICSWGA	22 9 Hole Champs	23 Jr Golf Championships		25 9 Hole Couples Golf
26 Parent Junior	27 Club Closed	28 18 Hole Pairings	29 9 Hole Guest Day Men's League	30	31	

**Tee times will likely still be available on event dates. Please check the tee sheet for a comprehensive view on availability.*

AUGUST						
Sun	Mon	Tue	Wed	Thu	Fri	Sat
						1
2	3 Club Closed	4 18 Hole Championships	5 9 Hole Pairings	6	7	8 Men's Donohoe Tournament
9 Men's Donohoe Tournament	10 Club Closed	11 18 Hole Pairings	12 9 Hole MYOG Men's League	13	14	15
16	17 Club Closed	18 18 Hole MYOG	19 9 Hole Pairings	20	21	22
23	24 Club Closed	25 18 Hole Pairings	26 9 Hole Pairings Men's League	27 Men's Stag Day	28	29 9 Hole Couples Golf

**Tee times will likely still be available on event dates. Please check the tee sheet for a comprehensive view on availability.*

SEPTEMBER						
Sun	Mon	Tue	Wed	Thu	Fri	Sat
		1 18 Hole Pairings	2 9 Hole Pairings Men's League	3	4 	5
6 	7	8 Club Closed	9 9 & 18 Hole Fun Day Men's Finals	10	11 Senior Club Champs	12 Senior Club Champs
13	14 Club Closed	15 18 Hole Informal Guest Day	16 9 Hole Pairings	17 Hosting Langford Cup	18	19
20 18 Hole Couples Champs	21 Course Closed Aeration	22 Course Closed Aeration	23	24	25	26
27	28 Club Closed	29 18 Hole MYOG	30 9 Hole Pairings			

**Tee times will likely still be available on event dates. Please check the tee sheet for a comprehensive view on availability.*

OCTOBER						
Sun	Mon	Tue	Wed	Thu	Fri	Sat
				1	2	3
4	5	6 18 Hole MYOG	7 9 Hole MYOG	8	9 CCDWGA Play Day	10
11	12	13	14 9 Hole Pairings	15	16 Strangline Invitational	17
KSHSAA 6A Girls State						
18	19	20 18 Hole Closing Day	21 9 Hole Pairings	22	23	24
25	26	27	28 9 Hole Closing Day	29	30	31

**Tee times will likely still be available on event dates. Please check the tee sheet for a comprehensive view on availability.*



Club Event Schedule

May 6th - 8th	East/West Cup
May 16th	Harry Robb Tournament
June 10th - 13th	Men's Sunflower Member-Guest
July 10th - 12th	Men's Club Championship
July 11th - 12th	Women's Club Championship
August 8th - 9th	Men's Donohoe Member-Member
August 20th - 22nd	Women's Sunflower Member-Guest
September 11th - 12th	Senior Club Championship
September 16th-18th	Langford Cup
September 20th	18 Hole Couples Championship
October 16th - 17th	Strangline Invitational



East/West Cup

DATE(S): May 6th - 8th

LOCATION: Greenbriar Hills Country Club

TIME OF EVENT: All Day

EVENT TYPE: Ryder Cup Style Match Play

FORMAT(S): Four-Ball, Foursomes and Individual Match Play

TEE(S): Various tees available

PAIRINGS: Determined by the Team Captains

ELIGIBILITY: Must qualify for the team through Qualifiers held at Milburn Country Club during fall of 2019.

COST: \$295 per player

ADD'L INFO: Team uniforms are provided, there will be a small out of pocket cost required to purchase your team uniform.

SCHEDULE:

Wednesday, May 6th Practice Round & Welcome Reception

Thursday, May 7th Four-Ball Matches
Modified Alternate Shot Matches
Formal Dinner

Friday, May 8th Individual Match Play
Awards & Departure

CONTACT: Kyle Capps, PGA Head Professional



Harry Robb Tournament

DATE(S): Saturday, May 16th

TIME OF EVENT: 10:00 am Shotgun

EVENT TYPE: Mixed

FORMAT(S): Four-person team event, modified scramble with drive minimums per player

TEE(S): Men- White/Green Tees

Ladies- Red Tees

PAIRINGS: Determined by the Professional Staff

SCORE POSTING: Scores will not be posted as the format does not

DIVISIONS: Men's & Women's

PRIZES: All prizes will be awarded in Golf Shop credit

REGISTRATION: Through the Professional Staff at
golfshop@milburn.org or online via Club website

ENTRY FEE: \$85 per player

FOOD & BEVERAGE: Breakfast, Lunch & Beer on course during play

ENTRY DEADLINE: Wednesday, May 13th at 5:00 pm

NO SHOW POLICY: Full entry fee will be charged after the deadline

CONTACT PERSON: Professional Staff



Men's Sunflower Member-Guest

DATE(S): June 10th - 13th

TIME OF EVENT: All Day

REGISTRATION Saturday, March 7th at 7:00 am, may register in

COMMENCES: person or via phone call

EVENT TYPE: Open to all male members and their guests

FORMAT(S): Four (4) day event, optional practice round on Wednesday, 45 holes of match play competition, 18 holes played on Thursday and Friday, 9 holes and a shootout on Saturday. Each team will play a better-ball match against the other teams in their assigned flights (5 matches total).

TEE(S): Green or White

HANDICAP Low handicap index in the last 12 months will be

ALLOCATION: used for tournament handicap. Each player will receive 90% of their Course Handicap.

SCORE POSTING: Scores will be posted by Professional Staff

ELIGIBILITY: All players must have a WHS handicap and 8 scores posted in 2020 to be eligible to compete.

**SCHEDULE OF
EVENTS:**

WEDNESDAY: Practice Rounds, Registration, Calcutta

THURSDAY: Match 1 & 2, Stag Night

FRIDAY: Match 3 & 4

SATURDAY: Match 5, Shootout & Party

ENTRY FEE: \$1,250 per team plus \$250 cash buy-in

FOOD & BEVERAGE: Included

CONTACT PERSON: Professional Staff

Men's Club Championship

DATE(S): July 10th - 12th

TIME OF EVENT: Friday afternoon tee times (Championship Flight only), Saturday and Sunday morning tee times for all divisions

FORMAT(S): Individual Medal Play

TEE(S): Black - Championship Flight

Green/White - Net Flights

HANDICAP Net Flights will receive 100% of their course

ALLOCATION: handicap

SCORE POSTING: Scores will be posted by Professional Staff

PAIRINGS: Determined by the Professional Staff

PRIZES: All prizes will be awarded in Golf Shop credit

REGISTRATION: Through the Professional Staff at
golfshop@milburn.org or online via Club website

ENTRY FEE: \$50 per player

FOOD & BEVERAGE: Beer provided after play

NO SHOW POLICY: Full entry fee will be charged after the deadline

ENTRY DEADLINE: Wednesday, July 8th - 5:00 pm

CONTACT PERSON: Professional Staff

Women's Club Championship

DATE(S): July 11th - 12th

TIME OF EVENT: Morning tee times

FORMAT(S): Individual Stroke Play (Net & Gross)

TEE(S): Red Tees

HANDICAP: All players will receive 100% of their course

ALLOCATION: handicap in Net Division

SCORE POSTING: Scores will be posted by Professional Staff

PAIRINGS: Determined by the Professional Staff

PRIZES: All prizes will be awarded in Golf Shop credit

REGISTRATION: Through the Professional Staff at
golfshop@milburn.org or online via Club website

ENTRY FEE: \$50 per player

FOOD & BEVERAGE: Beer provided after play

ENTRY DEADLINE: Wednesday, July 8th - 5:00 pm

NO SHOW POLICY: Full entry fee will be charged after the deadline

CONTACT PERSON: Professional Staff

Men's Donohoe Member-Member

DATE(S): August 8th - 9th

TIME OF EVENT: AM and PM Shotguns Each Day

FORMAT(S): Two-person team event

Saturday - 1 Net Best Ball

Sunday - Both Net Scores Count

TEE(S): White/Green Tees

HANDICAP Saturday - Each player receives 90% of handicap

ALLOCATION: Sunday - Each player receives 100% of handicap

PAIRINGS: Determined by the Professional Staff

SCORE POSTING: Scores will be posted by Professional Staff

DIVISIONS: n/a

PRIZES: All prizes will be awarded in Golf Shop credit

REGISTRATION: Through the Professional Staff at
golfshop@milburn.org or online via Club website

ENTRY FEE: \$200 per person

FOOD & BEVERAGE: Thursday - Pizza & Beer

Saturday - Breakfast, Lunch, Beer on course

Sunday - Breakfast, Lunch, Beer on course

ADD'L INFO: Saturday evening party included (spouses invited)

ENTRY DEADLINE: End of business on August 1st

NO SHOW POLICY: Full entry fee will be charged after the deadline

CONTACT PERSON: Professional Staff

Women's Sunflower Member-Guest

DATE(S): August 20th - 22nd

EVENT TYPE: Female members and their invited guests

FORMAT(S): Four-person team event, 2 Net Best Balls of the four-person team, flighted by handicap

TEE(S): Red Tees

HANDICAP ALLOCATION: Each player receives 95% of course handicap

PAIRINGS: You may select your own group, or the Professional Staff would be pleased to pair you up

SCORE POSTING: Scores will be posted by Professional Staff

DIVISIONS: n/a

PRIZES: All prizes will be awarded in cash

REGISTRATION: Registration commences on June 4th at the Sunflower Soiree

ENTRY FEE: \$250 plus tax per player

FOOD & BEVERAGE: Included

ENTRY DEADLINE: End of Business on July 30th

SCHEDULE:

Thursday, August 20th Optional Practice Round, Welcome Reception and Skills Contests

Friday, August 21st Breakfast, 18 Holes of Golf, Lunch & Derby

Saturday, August 22nd Breakfast, 18 Holes of Golf, Lunch & Awards

CONTACT PERSON: Heather Powell

Senior Club Championship

DATE(S): September 11th - 12th

TIME OF EVENT: Friday - Afternoon Shotgun

Saturday - Morning Shotgun

EVENT TYPE: Mixed, must be 50 years of age to qualify

FORMAT(S): Individual Medal Play, Gross & Net divisions

TEE(S): Men- White/Green Tees

Ladies- Red Tees

HANDICAP Each player will receive 100% of their course

ALLOCATION: handicap in the net division

PAIRINGS: Pairings will be determined by the Professional Staff

SCORE POSTING: Scores will be posted by Professional Staff

DIVISIONS: Gross & Net, Flighted by Handicap

PRIZES: All prizes will be awarded in Golf Shop credit

REGISTRATION: Through the Professional Staff at
golfshop@milburn.org or online via Club website

ENTRY FEE: \$45

FOOD & BEVERAGE: Beer provided after play

ENTRY DEADLINE: End of business on September 9th

NO SHOW POLICY: Full entry fee will be charged after the deadline

CONTACT PERSON: Professional Staff

18 Hole Couples Club Championship

DATE(S): September 20th

TIME OF EVENT: 1:00 pm shotgun

EVENT TYPE: Mixed

FORMAT(S): Better Ball of the Couple

TEE(S): Men - White/Green

Ladies - Red

HANDICAP: 90% of course handicap

ALLOCATION:

SCORE POSTING: Scores will be posted by Professional Staff

PAIRINGS: Determined by the Professional Staff

DIVISIONS: Net & Gross

PRIZES: All prizes will be awarded in Golf Shop Credit

REGISTRATION: Through the Professional Staff at
golfshop@milburn.org or online via Club website

ENTRY FEE: \$30 per couple

FOOD & BEVERAGE: None included

ENTRY DEADLINE: End of business Wednesday, September 17th

NO SHOW POLICY: Full entry fee will be charged after the deadline

CONTACT PERSON: Professional Staff

Langford Cup

DATE(S): September 16th-18th

LOCATION: Milburn Country Club

TIME OF EVENT: All Day

EVENT TYPE: Ryder Cup Style Match Play against Wakonda Country Club and Happy Hollow Country Club

FORMAT(S): Four-Ball Match Play

Modified Alternate Shot Match Play

Individual Match Play

TEE(S): Various tees available

PAIRINGS: Determined by the Team Captains

ELIGIBILITY: Must qualify for the team through Qualifiers held at Milburn Country Club during 2020 season.

COST: \$295 per player

ADD'L INFO: Team uniforms are provided, there will be a small out of pocket cost required to purchase your team uniform.

SCHEDULE:

Wednesday, Sept 16th Practice Round & Welcome Reception

Thursday, Sept 17th Four-Ball Matches

Modified Alternate Shot Matches

Formal Dinner

Friday, Sept 18th Individual Match Play

Awards & Departure

CONTACT: Luke Smith PGA Head Professional



Strangline Invitational

DATE(S): October 16-17

TIME OF EVENT: Friday PM, Saturday AM

EVENT TYPE: Mixed

FORMAT(S): Round 1 - Modified Chapman Alternate Shot
Round 2 - Better Ball

TEE(S): Men- White/Green Tees

Ladies- Red Tees

HANDICAP Round 1 - 60% (A player) + 40% (B player)

ALLOCATION: Round 2 - Both players receive 90% of CH

PAIRINGS: Determined by the Professional Staff

SCORE POSTING: Scores will be posted by Professional Staff

DIVISIONS: Flighted by Team Handicap

PRIZES: All prizes will be awarded in Golf Shop Credit

REGISTRATION: Through the Professional Staff at
golfshop@milburn.org or online via Club website

ENTRY FEE: \$250 per player

FOOD & BEVERAGE: Included

ENTRY DEADLINE: End of business Sunday, October 4th





On-going Events Schedule

Men's League

18 & 9 Hole Ladies

Junior Golf

Couples Golf

Stag Days

Phoenix Cup

On-going Events

Men's League

Date	Time	Description
Wednesday, March 11	6:00 PM - 8:00 PM	Draft Night
Wednesday, April 15	5:00 PM	Week #1
Wednesday, April 22	5:00 PM	Week #2
Wednesday, May 6	5:00 PM	Week #3
Wednesday, May 20	5:30 PM	Week #4
Wednesday, June 3	5:30 PM	Week #5
Wednesday, June 24	5:30 PM	Week #6
Wednesday, July 15	5:30 PM	Week #7
Wednesday, July 29	5:30 PM	Week #8
Wednesday, August 12	5:30 PM	Playoffs #1
Wednesday, August 26	5:30 PM	Playoffs #2
Wednesday, September 2	5:00 PM	Playoffs #3
Wednesday, September 9	5:00 PM	Playoff Finals

18 Hole Ladies

Date	Time	Event	Format
April 7	11:00 AM	Opening Day	Meeting, no golf
April 14	8:00 AM	Pairings	Low Net
April 21	8:00 AM	Memorial Tournament	
April 28	8:00 AM	Pairings	Closest to the Wavy Line
May 5	8:00 AM	Eclectic - Day 1	Individual Best Ball
May 12	8:00 AM	Eclectic - Day 2	Individual Best Ball
May 19	8:00 AM	Pairings	Low Putts
May 28	10:00 AM	MYOG	n/a

On-going Events

18 Hole Ladies Cont...

Date	Time	Event	Format
June 2	9:00 AM	Formal Guest Day	
June 9	8:00 AM	Pairings	Closest to the Pin #15
June 16	9:00 AM	Team Play	
June 23-24	8:00 AM	Member-Member	
June 30	8:00 AM	Pairings	Low Net Par 4s
July 7	8:00 AM	Pairings	Low Net Par 5s
July 14	8:00 AM	Informal Guest Day	
July 21	8:30 AM	IGSWGGA	
July 28	8:00 AM	Pairings	Longest Putt #10
August 4-5	8:00 AM	Championship	36 Hole Stroke Play
August 11	8:00 AM	Pairings	Low Net - Back 9
August 18	8:00 AM	MYOG	n/a
August 25	8:00 AM	Pairings	Low Net - Front 9
September 1	8:00 AM	Pairings	Closest to the Pin #3
September 9	9:00 AM	9 & 18 Hole Fun Day	Scramble
September 15	1:00 PM	Informal Guest Day	
September 29	8:00 AM	MYOG	n/a
October 6	8:00 AM	MYOG	n/a
October 9	8:30 AM	CCDWGA	
October 20	8:00 AM	Closing Day	

9 Hole Ladies

Date	Time	Event	Format
April 8	11:00 AM	Opening Day	Lunch & Meeting, no golf
April 15	9:00 AM	Pairings (Front)	Blind Draw

On-going Events

9 Hole Ladies

April 22	9:00 AM	Pairings (Back)	Odds
April 29	9:00 AM	Informal Guest Day	
May 6	9:00 AM	MYOG (Back)	
May 13	9:00 AM	Pairings (Front)	Evens
May 20	9:00 AM	Pairings (Back)	Pink Ball
May 27	9:00 AM	Preferred Classic Day 1	Individual Best Ball
June 3	9:00 AM	Preferred Classic Day 2	Individual Best Ball
June 10	9:00 AM	MYOG (Front)	
June 17	9:00 AM	Pairings (Back)	Stableford
June 24	9:00 AM	MYOG (Front)	
July 1	9:00 AM	Formal Guest Day	
July 8	9:00 AM	Pairings (Front)	Match Play vs. Par
July 15	9:00 AM	Championship (Back)	Individual Stroke Play
July 22	9:00 AM	Championship (Front)	Individual Stroke Play
July 29	9:00 AM	Informal Guest Day	
August 5	9:00 AM	Pairings (Back)	Shamble
August 12	9:00 AM	MYOG (Front)	
August 19	9:00 AM	Pairings (Back)	String
August 26	9:00 AM	Pairings (Front)	Bingo, Bango, Bongo
September 2	9:00 AM	MYOG (Back)	
September 9	9:00 AM	9 & 18 Hole Fun Day	Scramble
September 16	9:00 AM	Pairings (Back)	Drop Worst 2 Holes
September 30	9:00 AM	Pairings (Front)	Scramble
October 7	9:00 AM	MYOG (Back)	
October 14	9:00 AM	Pairings (Front)	Skins
October 21	9:00 AM	Pairings (Back)	Ladies' Choice
October 28	11:00 AM	Closing Day	Lunch/Awards, no golf

Junior Golf

Our Professional staff at Milburn Country Club is dedicated to providing the most rewarding junior program in the area. The programs offered will create a fun learning environment for junior golfers of all skill levels. Our staff will continue to review these programs ensuring maximum improvement and development of our junior golfers.

To allow for continued development and access to group instruction for our motivated junior golfers we offer Spring, Summer and Fall semesters.

- Spring, Summer & Fall available to children ages 7 to 17 years of age
- Summer Tiny Tour available to children ages 4 to 6 years of age

Spring Semester Dates/Times - \$25 per session

- Sundays from 1:00 pm to 2:00 pm as follows....
- April 12, 19, 26, May 3, 10, 17

Summer Semester Dates

- Clinics (Tuesdays) - May 28*, June 2, 16, 23, 30, and July 7
*This date is a Thursday due to the Club being closed on May 26th.
- Tiny Tour (Wednesdays) - June 3, 17, 24, July 1, 8, and 15
- Play Days (Thursdays) - June 4, 18, 25, July 2, 9, and 16

Fall Semester Dates/Times - \$25 per session

- Sundays from 2:00 pm to 3:00 pm as follows...
- September 13, 20, 27, October 4, 11 and 18

Additional Junior Golf Related Events

- Junior Club Championship - July 22-23
- Parent-Junior Tournament - July 26

For additional information please contact Junior Golf Manager, Zack Proffitt at zack@milburn.org

On-going Events

9 Hole Couples Golf

DATE(S): Saturday, May 30th

Saturday, June 27th

Saturday, July 25th

Saturday, August 29th

TIME OF EVENT: 5:30 PM Shotgun

EVENT TYPE: Mixed

THEMES: Each event will have a theme, participants will be encouraged to dress in theme appropriate attire.

FORMAT(S): Various Scramble Formats

TEE(S): Men- White/Green Tees

Ladies- Red Tees

TEAMS: Determined by Members upon registration, we are happy to pair you up with another couple.

PAIRINGS: Determined by the Professional Staff

FIELD SIZE: Limited to first 72 players to register

SCORE POSTING: Scores will not be posted as formats do not allow

DIVISIONS: n/a

PRIZES: All prizes will be awarded in Golf Shop Credit

REGISTRATION: Through the Professional Staff at
golfshop@milburn.org or online via Club website

ENTRY FEE: \$40 per player

FOOD & BEVERAGE: Beers and wine on course, dinner to follow

ENTRY DEADLINE: End of business Wednesday prior to event

Men's Stag Day(s)

DATE(S): Thursday, April 30th

Thursday, August 27th

TIME OF EVENT: 1:00 PM Shotgun

EVENT TYPE: Male members and their guests

FORMAT(S): Various Best Ball Formats

TEE(S): Men- White/Green Tees

TEAMS: May sign up in teams of 4 with any combination of members and guests you would like.

PAIRINGS: Determined by the Professional Staff

FIELD SIZE: Limited to first 120 players to register

SCORE POSTING: Scores will be posted by Professional Staff

DIVISIONS: n/a

PRIZES: All prizes will be awarded in Golf Shop Credit

REGISTRATION: Through the Professional Staff at
golfshop@milburn.org or online via Club website

ENTRY FEE: \$100 per player

FOOD & BEVERAGE: Lunch, Beers on course and Dinner to follow

ENTRY DEADLINE: End of business Sunday prior to event

NO SHOW POLICY: Full entry fee will be charged after the deadline

CONTACT PERSON: Professional Staff

On-going Events

Phoenix Cup Net Fourball Matches

Event: Net Fourball Matches

Format: Best Ball

Entry Fee: \$40

Additional Information: Each team consists of two players. Teams will be assigned a ranking based on combined handicap and then bracketed. Teams will compete against one another in a match play format. The low handicapper in the group will be reduced to 0 and the remaining players in the group will receive the full difference between their handicap and the low player of the foursome. Registration opens on **February 15 at 7:00AM** and closes on **March 8th at 5:00PM**

Phoenix Cup Gross Fourball Matches

Event: Fourball Gross Matches

Format: Best Ball

Entry Fee: \$40

Additional Information: Each team consists of two players. Teams will be assigned a ranking based on combined handicap and then bracketed. Teams will compete against one another in a match play format. There will be no shots given in gross match play. Registration opens on **Feb 15th at 7:00AM** and closes on **March 8th at 5:00PM**

Round/Start Date	Completion Date
1 - March 13 th	May 3 rd
2 - May 4 th	June 7 th
3 - June 9 th	July 12 th
4 - July 14 th	August 16 th
5 - August 18 th	September 20 th
Finals - September 22nd	November 1 st

Any requests for match extensions need to be submitted in writing to the Professional Staff prior to the completion deadline for that particular match. Maximum 1 week extension. Any matches unable to be completed will be decided by coin flip

Phoenix Cup Individual Matches (Net)

Event: Phoenix Cup Individual Matches Net

Format: Individual Match Play

Entry Fee: \$40

Additional Information: Members may sign up in any and all divisions. Those who sign up will be assigned a ranking based on their handicap, the entire field will then put into four brackets and players will compete against one another in a match play format. The lower handicap player of the two will be reduced to 0 and the higher handicap player will receive the full difference between the two handicaps. Registration opens **February 15th at 7:00AM** and closes on **March 8th at 5:00PM**.

Phoenix Cup Individual Matches (Gross)

Event: Phoenix Cup Individual Matches Gross

Format: Best Ball

Entry Fee: \$40

Additional Information: Members may sign up in any and all divisions. Those who sign up will be assigned a ranking based on their handicap, the entire field will then be put into four brackets and players will compete against one another in a match play format. There will be no shots given in gross matches.

Round/Start Date	Completion Date
1 - March 20 th	May 10 th
2 - May 12 th	June 14 th
3 - June 16 th	July 19 th
4 - July 21 st	August 23 rd
5 - August 25 th	September 27 th
Finals - September 29th	November 1 st

****You must turn in the scorecard following the completion of your match. Results will not be posted until scorecards have been submitted to the Professional Staff. All scores will be posted hole by hole. You must indicate most likely score for any holes not completed during the course of the match****

Indoor Golf Performance Center

Located on the South Campus near the Tennis facility, we have a state of the art indoor simulator room. The indoor space affords golf members the opportunity to improve their games rain or shine. Inside the simulator room you will find two putting areas, two indoor hitting bays featuring Foresight golf simulator and video technology. In addition to the space, the Professional Staff is armed with cutting edge technology including;

- ◆ **Foresight Simulator:** Our simulator can be used for practice and play. Provides highly accurate ball and swing data. Great option when the weather is nasty!
- ◆ **Flightscope:** Launch monitor that measures ball spin rate, club head speed, ball speed, launch angle, direction, distance and more. Utilized during lessons, club fittings and practice sessions. Can be used both indoors and outdoors.
- ◆ **GASP Video Integration:** Each of our teaching bays is armed with GASP video software. With two (2) cameras in each bay, we are able to capture, down the line, and face on views of your golf swing. Instructors are trained to utilize video to capture, compare and improve the performance of their students.
- ◆ **SAM PuttLab:** The worlds most accurate and comprehensive putt analysis and training system. 43% of the golf shots are putts, however, putting is rarely trained systematically. This technology allows our instructors to evaluate your strengths and weaknesses and fit you to the correct putter for your stroke. Additionally, it may be utilized for training modules to quantify your progress during practice sessions.
- ◆ **Equipment Fitting Systems:** Getting custom fit for clubs is essential for golfers looking to take the next step in their game. Our staff of Golf Professionals are equipped with the technology, expertise, and fitting philosophy to work with you to dial in equipment that's built for your game. Our only goal is to maximize your enjoyment of the game by helping you to shoot lower scores. We carry fitting carts with the latest and greatest from Callaway, Ping, TaylorMade, Titleist and Mizuno.

Golf Programming

Thursday Night “Birdie Girls” - \$30 (includes complimentary glass of wine)
(5:30 p.m. - 6:30 p.m.)

Thursdays, May 8th through October 1st

This spring we are excited to bring back our Birdie Girls golf program. This is a non-competitive instructional program custom tailored for the needs of new and beginning golfers. Whether you come out for the instruction or just to socialize with your peers, you are sure to enjoy yourself.

Our goal is to learn a little (or a lot), while having a really good time! We will be hosting Birdie Girls at 5:30 p.m. on Thursday evenings from May 8th through October 1st.

Each week we will meet on the Patio outside the golf shop. After filling your complimentary glass of wine the Professional Staff will host a one (1) hour group instructional clinic. Topics will vary week to week. You may sign-up in advance online or by calling or stopping by the golf shop. Sign-up will be limited to 12 players each week.

Topics we'll cover include:

- The Rules and Etiquette of Golf
- How to set up a meaningful practice routine
- Managing your way around the course
- Pace of play and having fun, even when it's busy
- Chipping, putting and bunker play
- Irons and wedges
- Hitting your driver, fairway woods and hybrids

If you have any questions, feel free to ask. We are here to help.

To register, please contact the professional staff at (913) 432-1224 or email Head Professional Kyle Capps at kyle@milburn.org



Golf Programming

Equipment Fitting Days

EVENT TYPE: Member Event. Guest of members are welcomed

LOCATION: Driving Range

COST: Complimentary, please schedule an appointment with the Golf Shop

CONCEPT: Each Fitting Day will have a sign-up in advance. Appointments will be available in 30 minute increments. Three (3) appointments will be available each hour. During this time you will have one on one attention with a member of the Golf Professional staff as well as the assistance of the manufacturer's representative. Member's may drop-in, however those with appointments will receive priority.

PURPOSE: GET CUSTOM FIT FOR ULTIMATE PERFORMANCE

Want to maximize your performance on the course? Getting custom fit for clubs is essential for golfers looking to take the next step in their game. Our staff of Golf Professionals are equipped with the technology, expertise, and fitting philosophy to work with you to dial in equipment that's built for your game. Our only goal is to maximize your enjoyment of the game by helping you to shoot lower scores.

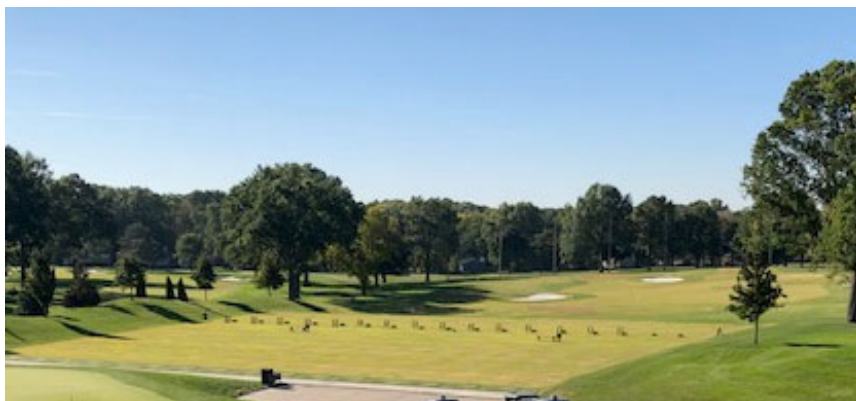


Spring Fitting Series

Date	Time	Company
Friday, April 3	3:00 PM—6:00 PM	Ping
Wednesday, April 15	2:00 PM—5:00 PM	PXG
Thursday, April 16	3:00 PM—6:00 PM	Titleist
Saturday, April 18	3:00 PM—6:00 PM	Mizuno
Thursday, April 23	3:00 PM—6:00 PM	Callaway
Saturday, April 25	2:00 PM—5:00 PM	TaylorMade

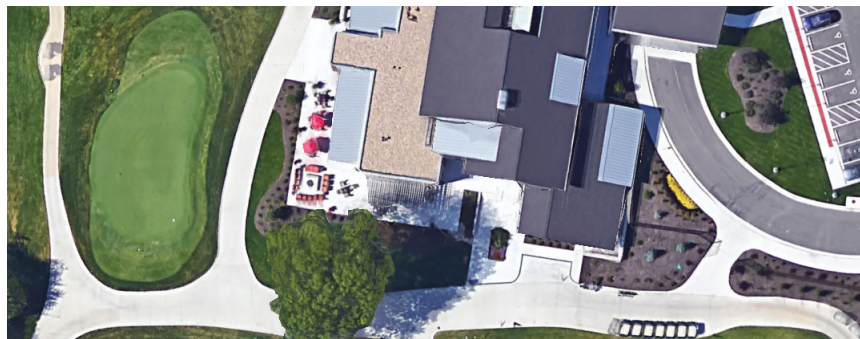
Summer Fitting Series

Date	Time	Company
Tuesday, June 16	3:00 PM—6:00 PM	Titleist
Saturday, June 20	2:00 PM—5:00 PM	TaylorMade
Thursday, June 25	3:00 PM—6:00 PM	Mizuno
Friday, June 26	3:00 PM—6:00 PM	PXG
Saturday, June 27	3:00 PM—6:00 PM	Callaway



Rates and Fees

Golf Carts	18 Holes	\$22	9 Holes	\$11
Push Carts	18 Holes	\$8	9 Holes	\$4
Electric Caddies	18 Holes	\$14	9 Holes	\$7
Weekday Guest	18 Holes	\$90	9 Holes	\$45
Weekend Guest	18 Holes	\$105	9 Holes	\$52.50
Weekday Family Guest	18 Holes	\$45	9 Holes	\$22.50
Weekend Family Guests	18 Holes	\$52.50	9 Holes	\$27.50
Bag Storage	Annually	\$135
Jr. Bag Storage	Annually	\$67.50
Locker Fee	Monthly	\$20
Adult Handicap Fee	Annually	\$55
Junior Handicap Fee	Annually	\$30
Tournament Fund	Annually	\$50
Hole in One Club	Per	instance	\$2
Indoor Simulator	1 Hour	\$25
Simulator Guest	1 Hour	\$35
Add'l Member	1 Hour	\$15



Instruction

	45 Minutes
Luke Smith, PGA Director of Golf	\$85
Kyle Capps, PGA Head Golf Professional	\$85
PGA Assistant Professional Staff	\$65

Your PGA professional staff is available for private or group instruction at your convenience and is armed with the latest in video and launch monitor technology to assist in your development as a golfer. Services include but are not limited to...

- Club-Fitting (Callaway, Mizuno, Ping, TaylorMade and Titleist)
- GAP Analysis utilizing Flightscope Launch Monitors
- Putter Fitting/Analysis utilizing SAM PuttLab
- Full swing and short game lessons utilizing video
- On-course coaching sessions focusing on strategy and decision making

Etiquette & Attire

For your comfort and the comfort of all members, please be familiar with the Club's dress code policy. Please ensure that your guests are aware of our dress code policy before they reach the club. All members shall conform to the Rules of Etiquette set out in the Rules of Golf and preamble.

Gentlemen's Golf Attire for Golf Course and Practice Areas:

- Slacks, Bermuda or mid-thigh length shorts
- Shirts must have collars, turtlenecks or mock turtleneck collars
- Shirts must be tucked in at all times
- Headwear must always face forward
- Metal spikes are not permitted at MCC
- No denim jeans are permitted

Ladies Golf Attire for Golf Course and Practice Areas:

- Skirts, slacks or mid-thigh length shorts
- Sleeveless shirts must have a collar
- Metal spikes are not permitted at MCC

The following attire is not acceptable on the Golf Course or Practice Areas:

- T-Shirts
- Athletic/ Active wear (warm up suits, yoga pants, etc.)
- Denim Jeans (regardless of color)
- Cargo Shorts and Cargo Pants
- Athletic Shorts
- Swimwear
- Halter Tops
- Tank Tops

Care of the Course

Players must exercise reasonable care to maintain the golf course and practice areas. At all times, players should leave the course in better condition than they found it. As such, players must:

- Repair all divots and ball marks
- Rake all bunkers
- Dispose of all trash, including broken/used tees
- Operate carts in accordance with Club Rules/Policies
- Juniors must have a valid driver's license to operate a golf cart

Members are responsible for any deliberate damage done to the golf course and/or practice areas and/or golf carts, including for any deliberate damage done by a member's family and/or guest.

Members are also responsible for any damage to neighboring properties.

Golf Course Rules

At all times, players are to conduct themselves on the golf course in accordance with the USGA Rules of Golf. As such, players are specifically reminded that “Unlike many sports, golf is played, for the most part, without the supervision of a referee or umpire”. The game relies on the integrity of the individual to show consideration for other players and to abide by the Rules.

All players should conduct themselves in a disciplined manner, demonstrating courtesy and sportsmanship at all times.

This is the spirit of the game of golf.

- The Rules of Golf shall govern all play, except as modified by the local and ground rules.
- Play is not allowed on any closed area of the course and/or practice area.
- Practice is not allowed on the course; practice is limited to designated practice areas.
- Players may not play more than two balls on the course at any time; players may not play more than one ball if other players are behind them.
- Children under the age of 13 are permitted on the course and practice areas at the discretion of the Golf Professional Staff.

Practice Facilities

- The practice range, putting clocks, and short game area will be available 30 minutes before the first tee time of the day.
- The practice range will close 30 minutes before dusk to allow the golf staff to clean the range for maintenance. The range closes 90 minutes before dusk on Sundays.
- The use of personal practice balls is limited to the chipping green and the putting clock.
- The fence enclosing the south end of the range is a safety measure for player protection while on the course. Players using the range must not deliberately hit balls over the fence onto #2 Fairway or onto #18 Fairway. Those who do will be subject to suspension from use of the practice range.

Note:

The dress code policy is in effect on the Driving Range and Putting Clock at all times.

Schedule of Play

Tee Times:

Members will be able to make tee times up to one week in advance in person, via e-mail/telephone or on the club website. Walk-on times will also be available. All players must register in the Golf Shop before beginning play. Play may not begin on any hole other than the first tee, without permission from the Professional Staff.

Tuesday-Friday (Non-Prime Time):

- All play will begin on hole #1 unless otherwise advertised by the golf shop.
- In order to allow the golf course maintenance staff appropriate time to prepare the golf course, the first tee time will begin no earlier than 8am.
- Starting on hole #10 is not permitted without approval of the golf shop in advance.

Saturdays, Sundays and Holidays (Prime Time):

- All play will begin on hole #1 unless otherwise advertised by the golf shop.
- In order to allow the golf course maintenance staff appropriate time to prepare the golf course, the first tee time will begin no earlier than 6:48am.
- Starting on hole #10 is not permitted without approval of the golf shop in advance.
- Prime Time is until 1pm on Saturdays, Sundays and Holidays

Schedule of Play

Monday:

- The golf course will allow member play after 2pm unless otherwise noted in advance by the Superintendent or Professional Staff. The golf course will allow member play after 2pm, weather permitting. It is possible that the golf course will remain closed all day, if temperatures do not get high enough to allow the frost to lift.
- The golf shop, practice range and clubhouse will remain closed on Mondays and all play will be restricted to walking only.
- Guests are not permitted on Mondays.

Tuesday:

- During the “Off Season” (January 1st-March 31st) the golf course will allow member play after 2pm, weather permitting. It is possible that the golf course will remain closed all day, if temperatures do not get high enough to allow the frost to lift.
- The golf shop, practice range and clubhouse will remain closed on Tuesdays and all play will be restricted to walking only.
- Guests are not permitted on Tuesdays.

Note:

Times may be adjusted periodically. Please check with the golf shop for any altered times to this schedule.

Pace of Play

Golfers are expected to maintain Milburn's approved Pace of Play standard of **4:11** and/or keep pace with the group in front of them.

- If a group is one clear hole behind the group in front of it, or is delaying play on account of a lost ball, then that group must invite the group following to play through.
- The Golf Shop staff is authorized to enforce the Pace of Play.

When one or two groups are playing at a pace that is slower than our standards it can disrupt the day for countless others behind them. **We encourage everyone to play at a better pace to ensure that all of our golfers have the opportunity to play in 4 hours and 11 minutes or less.**

- Always practice ready golf
- Be at your ball prepared to play when it is your turn to play
- Take extra clubs with you from your cart
- Practice continuous putting until your ball is holed, provided you are not interfering with your playing partner's line of play
- Make every effort to keep up with the group in front and not just in front of the group behind
- Keep an eye on the time and try to clear the first 9 holes in 2 hours and 5 minutes
- Please keep pace with the group ahead of you and not the group behind you

Fivesomes:

- Milburn allows fivesomes. Fivesomes must maintain the Pace of Play.
- The Professional Staff has the discretion to decide who and when fivesomes can play.

Pace of Play

The Golf Shop will be tracking starting and ending times to have an accurate accounting of pace of play. Our minimum acceptable pace of play is **4:11 minutes**. If your group has one or more holes open ahead of you and your ending time is longer than **4:11** you may receive a Pace of Play warning

Recommended Pace of Play:

Hole #1	Hole #2	Hole #3	Hole #4	Hole #5	Hole #6	Hole #7	Hole #8	Hole #9
:13	:28	:41	:55	1:08	1:23	1:36	1:51	2:05
Hole #10	Hole #11	Hole #12	Hole #13	Hole #14	Hole #15	Hole #16	Hole #17	Hole #18
2:19	2:33	2:47	3:01	3:15	3:28	3:42	3:57	4:11

Reminder:

When you bring guests out, please remember as a member it is your responsibility to make sure that your guests are aware of our pace of play policy along with our other policies/rules i.e. cart rules, golf course care & dress code etc.

Guest Policies

- Members may bring up to three (3) guests during non prime times. All guests must be accompanied by the member while at the club.
- Members may be restricted to only one (1) guest during prime time play. Please check with the golf professionals for any limitations for the day.
- A golfing guest (not immediate family) is restricted to four (4) rounds per year, excluding approved guest days and the Sunflower tournament.
- A member must register all golfing guests with the Golf Shop prior to play.
- All outside tournaments and any group of more than two foursomes without a member must be submitted to the GM/COO and Head Golf Professional.
- All rules governing guest play will be enforced by the Professional Staff.

SOCIAL MEMBER GOLF PRIVILEGES

This membership also includes 3 rounds of golf per year, limited to weekdays only (Tuesday –Thursday) and allows for the child(ren) of Social Members to participate in the Junior Golf Program. Normal guest fees will apply for any guests of a Social Member. If they would like, social members may purchase 4 additional rounds (at the normal guest fee rate), during the course of a calendar year.

Guest Policies

A member may bring as his or her guest a person who has one of the following relationships to the member and be charged 50% of the normal guest fee. This would include fathers, mothers, sons, daughters, stepsons, stepdaughters, sons-in-law, daughters-in-law, grandchildren, fathers-in-law, and mothers-in-law of the member.

A Family Guest is restricted to ten (10) rounds per year consisting of 4 Peak and 6 Off Peak rounds.

Peak: Saturday- Sunday*

Off Peak: Tuesday- Friday

Season: April 1st- October 31st

Off Season: November 1st- March 31st

There is no limit to off season and rounds are at the discretion of the golf professional.

*Peak hours are until 1pm on Saturday and Sunday.

Golf Cart Policies

- Carts must be operated consistent with Club Rules/policies at all times.
- Only Club owned carts are permitted on the course.
- All carts must be operated in a careful, responsible manner. When on the path with electric carts, all four tires of the cart should be on the path at all times.
- When off the path, electric carts are not allowed in the rough other than to enter/exit the fairway. Electric carts are not allowed on #16 fairway at any time.
- Juniors must have a valid driver's license to operate a golf cart.
- When cart traffic is "off the paths", golf carts are not permitted within 30 yards of any green or bunker and must stay on the cart path near all tees.

Handicap Flag Policy:

The policy is intended for those that truly need assistance getting to their golf ball and that are impacted by the cart path only rule during the winter months. Those that do receive the privilege to leave the path are still asked to minimize riding on the course as much as possible; therefore if it is possible to walk to the ball, we would ask that you do so. In order to receive a handicap flag, the member must:

- Have a valid handicap notification on his/her automobile
- Have a valid doctor's note

Handicap carts are not permitted within 30 yards of any tee or green or within 10 yards of any bunker. Handicap carts are also not permitted off the paths on all Par 3 holes or hole #16.

Two players in the same group requiring handicap flags must share the handicap flagged cart.

Handicap flags will not be allowed when the weather/course conditions prohibit their use.

Playing from the Forward Tees during Tournaments:

Members wishing to play forward tees in club events may do so as long as they post the majority (over 50%) of their rounds from that set of tees and make the Professional Staff aware prior to the registration deadline.

Second Club Members:

Second Club Members are eligible for all tournaments at Milburn (except the Bigley Cup Matches), however only on a wait list or alternate basis.

Limited Field Events (Sunflower, Strangline, Stag Days)

- May sign up 24 hours after the initial sign up opportunity.
- If full, they can be placed on the wait list; if not full, they are entered.

Once entered into a tournament, they cannot be bumped by another entry, and once having a position established on the wait list, that position is secure. Can enter all open field events without restriction (Club Championship, Harry Robb, Donohoe).

Organizations

The various golf organizations are designed to enhance the member golf experience. Through these various organizations, members can always find a game and more importantly, interact with other members forming a lifetime bond that only golf and Milburn CC can provide. Please contact our Golf Professional Staff for more information.

Men's League:

Men's League kicks off in April with 8 weeks of regular season play. 27 teams will be divided into 3 divisions. Each team will play a round robin match play schedule within their division. There are individual and team formats on a weekly basis. Matches are determined by handicap, limiting the number of strokes given. Following the regular season, 4 weeks of playoffs will allow us to determine our 2020 Men's League champions. If you are interested in joining Men's League and are not currently on a roster, please contact the Professional Staff.

Bigley Cup Matches:

The Bigley Cup is a competition of like-minded, traditional golfers from thirteen private clubs in the Kansas City metropolitan area. Clubs are broken into pods where we play a home and home schedule throughout the season. Winners of each pod will advance to the postseason to be hosted on a neutral site. Each match consists of 18 amateurs and 2 professionals from each club competing in various match play formats. If you would like to participate please contact the Professional Staff.

Ladies 18 Hole Golf Association:

The Ladies 18 Hole Association play each Tuesday morning from April through the closing day in October. The chair for the Ladies Association in 2020 is Nancy Diebel. Throughout the season the 18 Hole Association hosts tournaments, pairing days, make your own game days and informal and formal guests days. Additionally, the ladies compete throughout the city in various events such as Team Play, CCDWGA and ICWSGA. For more information please contact the Professional Staff.

Ladies 9 Hole Golf Association:

The Ladies 9 Hole Association hosts weekly play days each Wednesday from April through October. The 9 Hole group also plays host to other clubs and competes around town at various clubs. Stacey Sprecker and Lauren Stover are the co-chairs for the Ladies 9 Hole group in 2020.

Reciprocal Relationships

Milburn has a unique relationship with three other clubs in the region. As a member of Milburn you get to enjoy the same member privileges at Wakonda Country Club (Des Moines, Iowa), Happy Hollow Country Club (Omaha, Nebraska) and Greenbriar Hills Country Club (Kirkwood, Missouri). In order to take advantage of this wonderful benefit, you must contact the Milburn administrative office at (913) 432-0490 to make the arrangements for you. They will call the club on your behalf and arrange golf, tennis and/or dining for your convenience.

You will pay only normal associated fees for golf. You are able to host a guest based upon the guest policy at that particular club. There is no charge for tennis court times and dining reservations are required and will be charged back to Milburn.

The three clubs are:

Happy Hollow Country Club
Omaha, Nebraska www.happyhollowclub.com

Wakonda Country Club
Des Moines, Iowa www.wakondaclub.com

Greenbriar Hills Country Club
Kirkwood, Missouri www.greenbriarcc.com

Clubhouse Directory

<u>EXT</u>	Name	Direct Dial	Title
106	Amanda Nelson	890-2636	Membership Director
105	Brian Welch	890-2635	Executive Chef
116	Craig Gansen	890-2638	Tennis Pro
129	Dave Domke		Beverage Manager
126	Donnie Allis		Asst. Golf Professional
110	Donohoe	890-2647	
103	Dylan Pepper	890-2633	F&B Manager
109	Emily Minear	890-2633	Service Operation Director
275	Golf Shop	432-1224	
107	Holly Milburn	890-2637	Event Director
104	James Nanson	890-2634	General Manager / COO
123	Kyle Capps	432-1224	Head Golf Professional
108	Langford Pub	890-2646	Reservation Desk
112	Langford Pub	890-2646	Bar
113	Life Guard Shack	432-0491	
122	Luke Smith	890-2641	Director of Golf
	Steve Wilson	236-9951	Grounds Superintendent
115	Tennis Counter		
100	Tracey Strong	890-2630	Accounting Manager
102	Trina Davis	890-2632	Controller / CFO
126	Zack Proffitt		Asst. Golf Professional

Clubhouse Wi-Fi Access - GUEST



MILBURN
COUNTRY CLUB
1917

7501 W. 69TH ST.
OVERLAND PARK, KS 66204

(913) 432-0490
WWW.MILBURN.ORG